

Lecture 3

Thur. 03 Sep. 2009

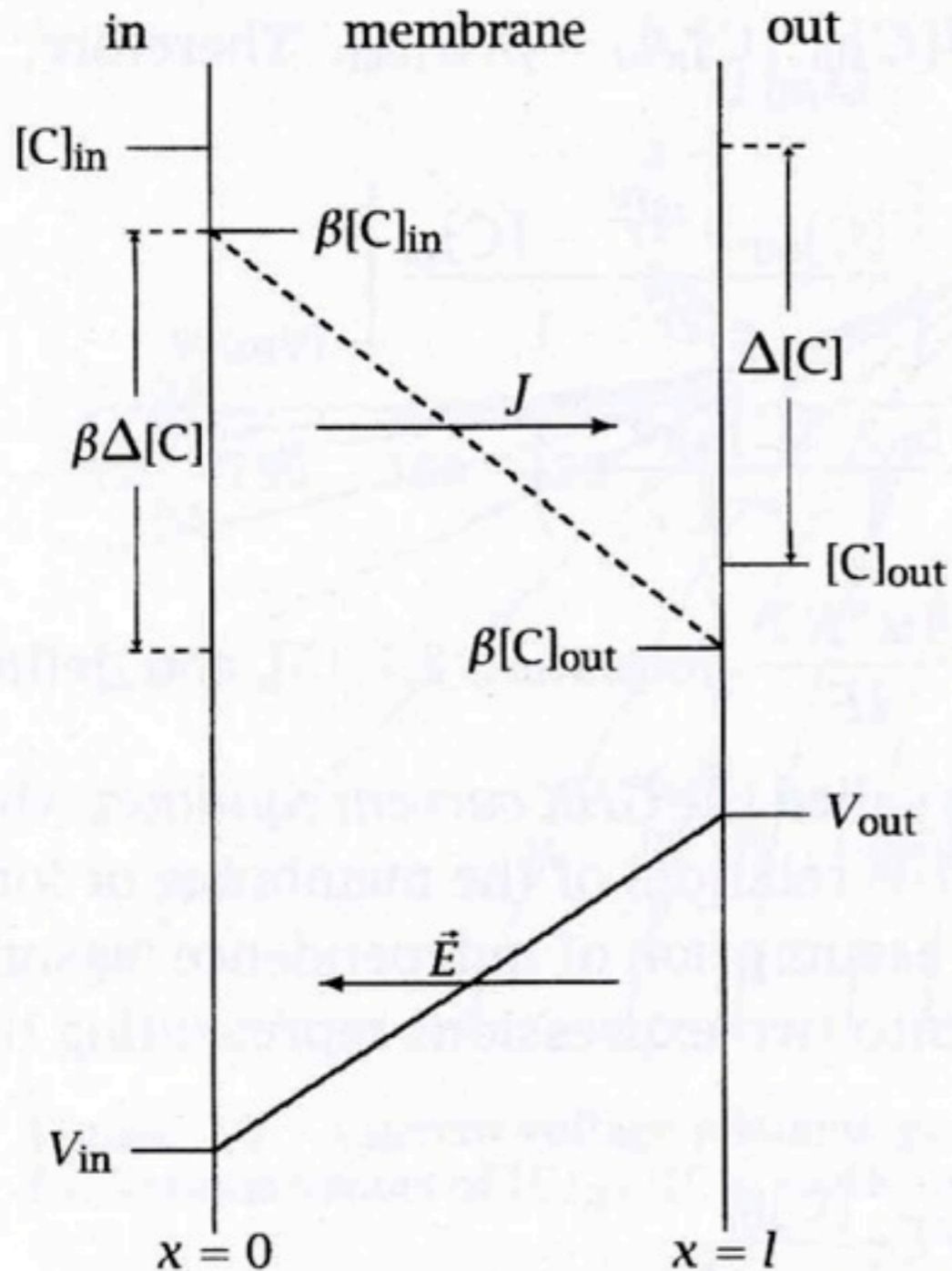
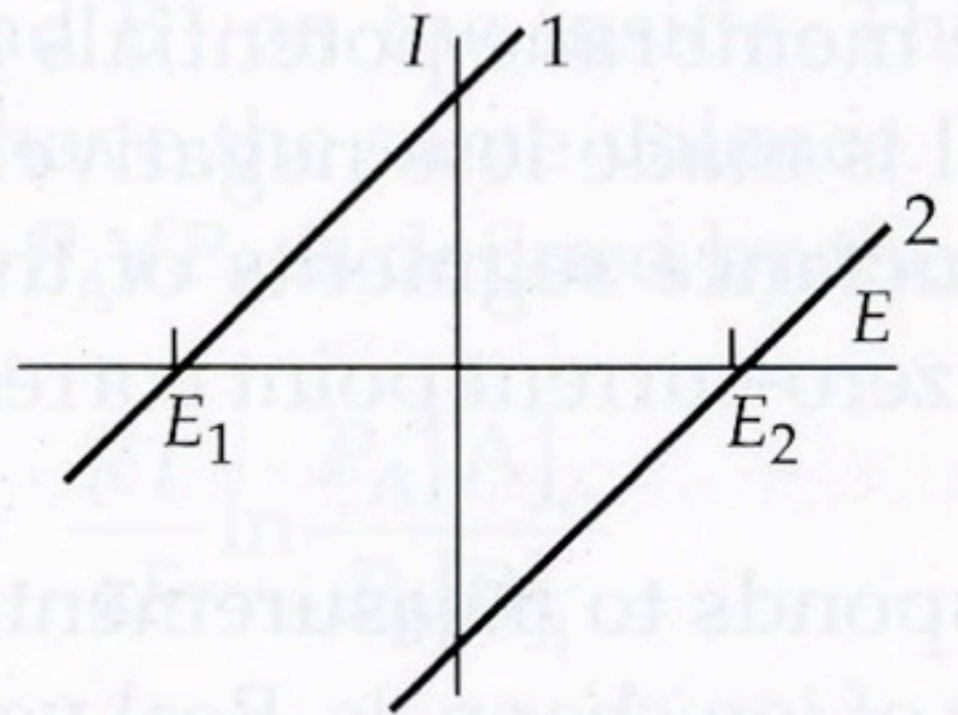
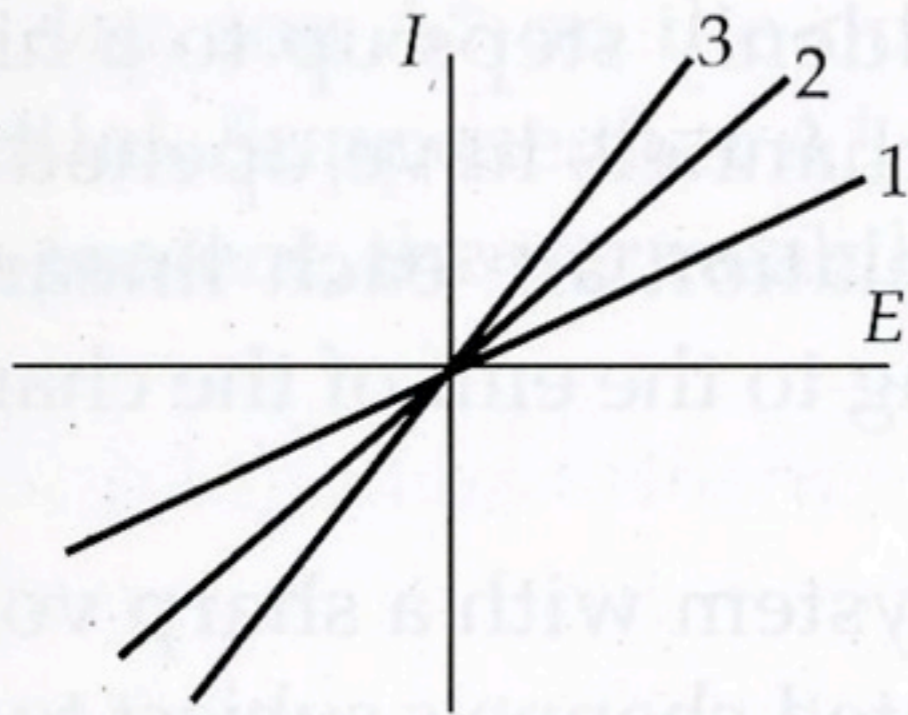
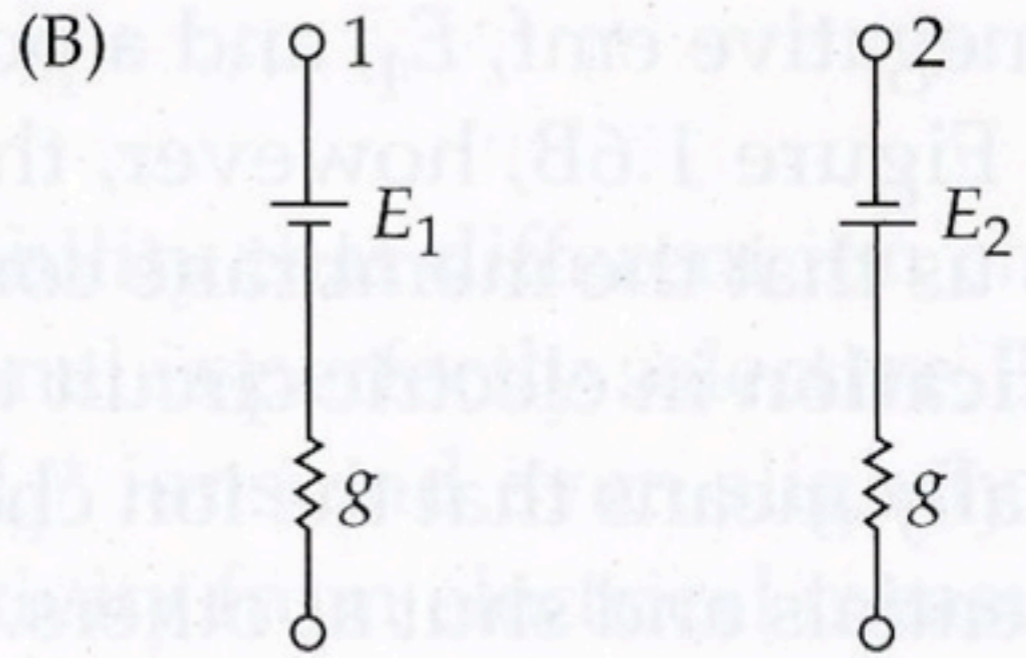
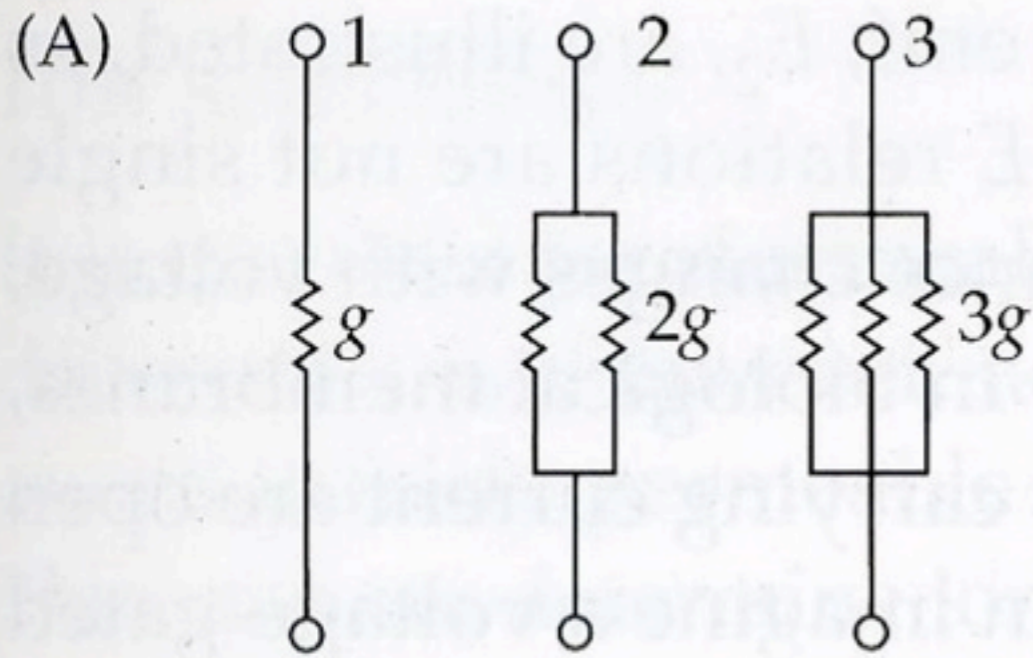
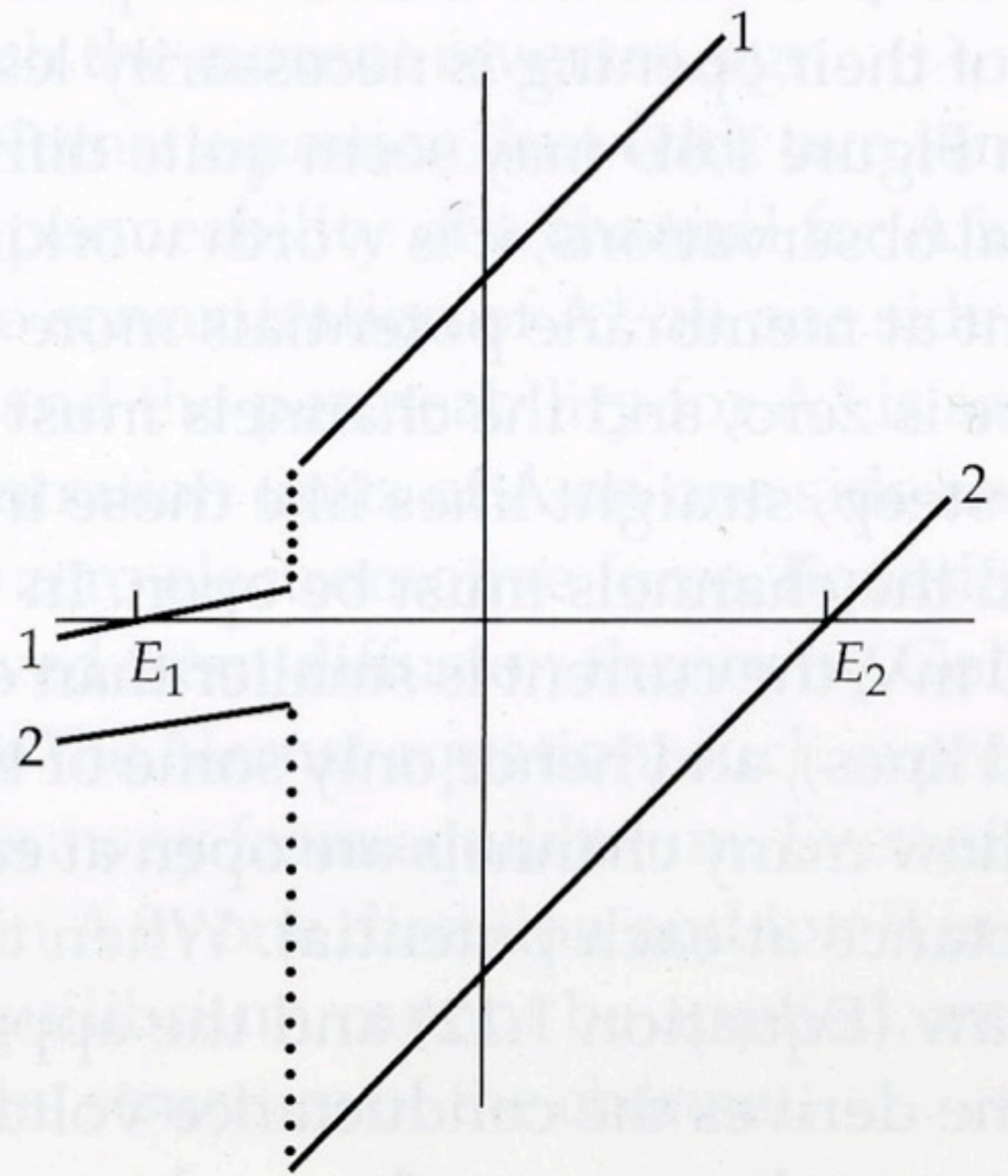
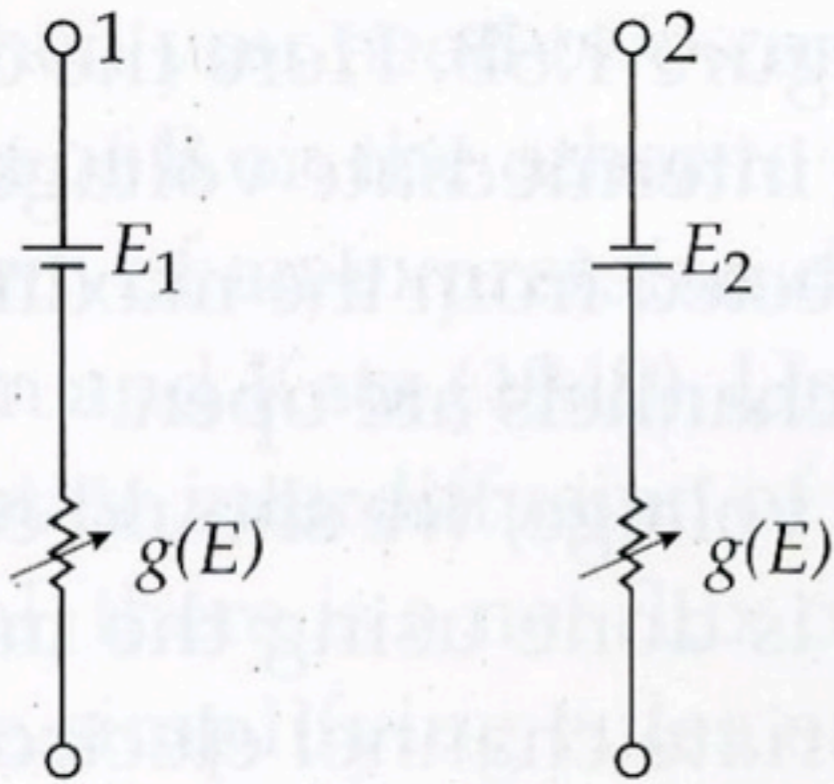
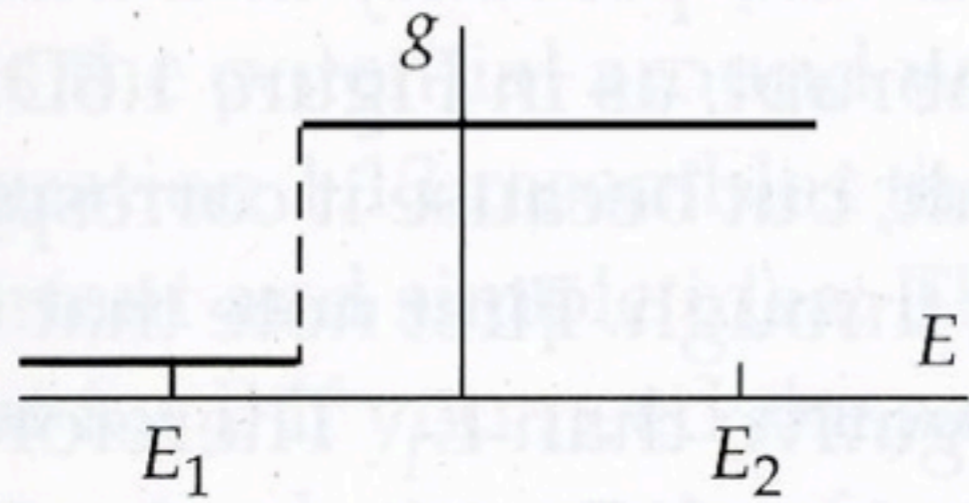


Figure 2.4 Concentration and electrical potential profiles of a membrane for the constant field model. The ordinate represents concentration C (upper portion) and electrical potential V (lower portion). The abscissa represents distance. J is the ionic flux. β is the water-membrane partition coefficient and \vec{E} is the electric field.



(C)



(D)

